

Erratum

Flow Characteristics in a Transonic Ultra-Low-Aspect-Ratio Axial Turbine Vane

Naoki Kuno and Toyotaka Sonoda
Honda R&D Co., Saitama 351-0193, Japan

[*Journal of Propulsion and Power*, 20 (4), pp. 596–603 (2004)]

FIGURES 6 and 15 in this article were published in black and white because of an error on the part of AIAA. The

author's intent was to publish these figures in color. AIAA regrets the error.

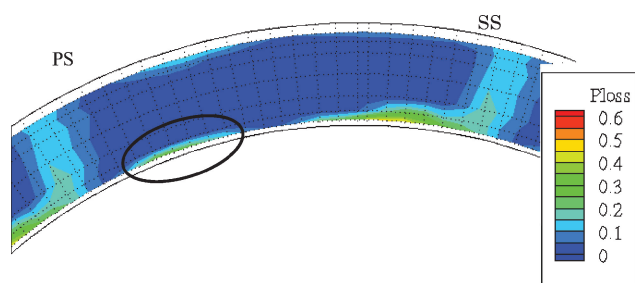


Fig. 6 P_{loss45} contours at NGV exit (test results).

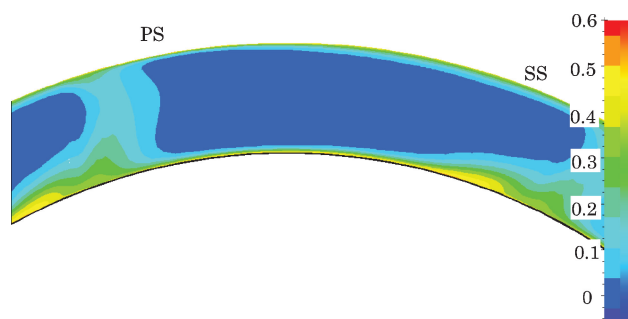


Fig. 15 P_{loss45} contours at NGV (baseline).